



Suntech Power Holdings Co., Ltd.

17-6 Chang Jiang South Road
New District Wuxi, China 214028

尚德电力控股有限公司
中国无锡国家高新技术产业开发区
长江南路17-6号 邮编 214028

T +86 510 8531 8888

F +86 510 8534 3321

Declaration of Anti-counterfeit Products

Date of Revision: Dec. 16,2008

Rev.: 1.1

Dear Respected Partners and Customers of Suntech

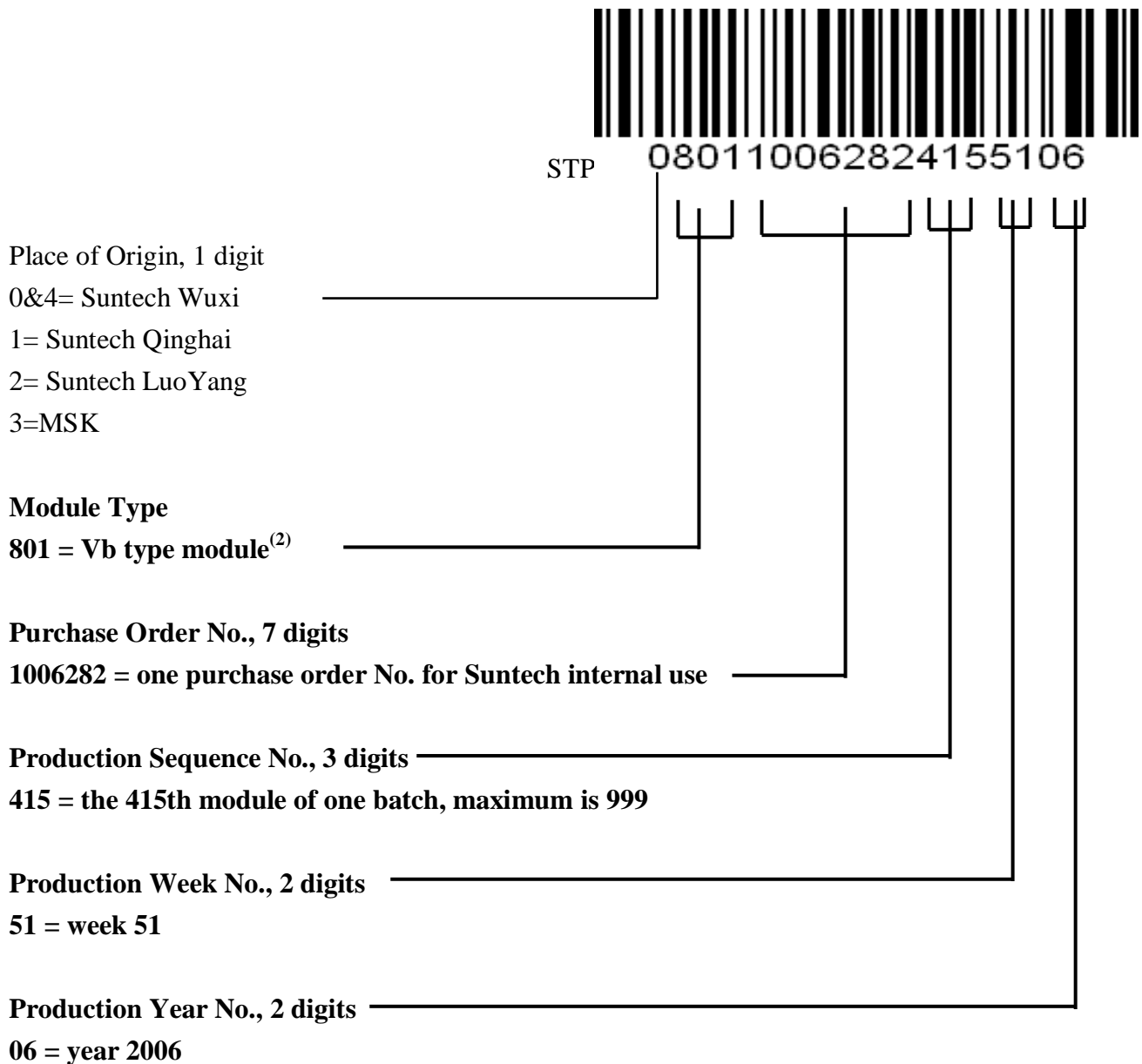
Growing global counterfeiting of Suntech brand has repeatedly been discovered in the PV market, which has been ruining the interests of consumers around the world, severely damaging the reputation of Suntech brand and competitiveness of Suntech products.

Here we would like to call your attention on identification of our genuine products of Suntech brand with following aspects and wish your cooperation on reducing and fighting against counterfeits.

- Serial number of Suntech PV modules

There are two versions of Suntech’s serial numbers. The old version of serial number is made up of 18 digits; and the new version starts by ‘STP’ followed by 18 digits. The bar codes of both versions adopt Code 128 SET B format for scanning purpose. You can find two serial numbers on every Suntech PV module, one is laminated between the glass and the back sheet, and the other is stick on a side of aluminum frame.

- ◆ As a reference, Suntech serial number is named in the following methodology,



- ‘STP’ on a corner of cell and Suntech logo on the cover of junction box
 - ◆ As a guide, we chose following two pictures and circle the key points for your identification purpose.



STP sign on each cell



Suntech Logo on junction box

- Suntech Nameplate

There is a Suntech standard nameplate on the backsheet of each Suntech PV module, and you should especially pay attention on the circled items.

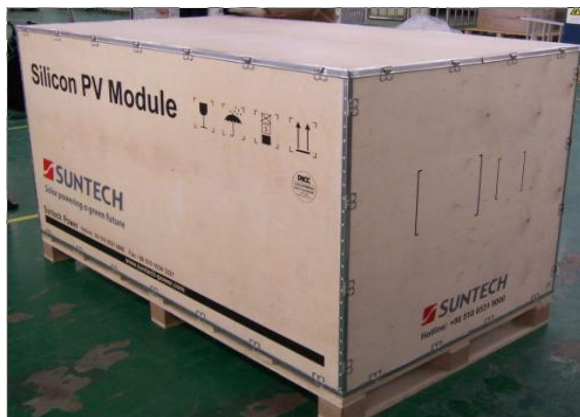
- ◆ As a guide, we would like to show you one representative nameplate

		
Model Number		STP170S-24/Ac
Rated Maximum Power	(P_{max})	170W
Output Tolerance		±3%
Current at Pmax	(I_{mp})	4.80A
Voltage at Pmax	(V_{mp})	35.6V
Short-Circuit Current	(I_{sc})	5.15A
Open-Circuit Voltage	(V_{oc})	44.4V
Nominal Operating Cell Temp.	(T_{NOCT})	45°C±2°C
Weight		15.5kg
Dimension		1580×808×35(mm)
Maximum System Voltage		1000V
Maximum Series Fuse Rating		15A
Cell Technology		mono-Si
All technical data at standard test condition		
AM=1.5	E=1000W/m ²	Tc=25°C
		
Add: 17-6 ChangJiang South Road, New District Wuxi, China 214028 Customer Service Hot Line: +86 400 8888 009 Fax: +86 510 8534 3321 Manufactured in China		

- Outer Package of Suntech Modules (A series, V series and U serials)
 - ◆ As a guide, we would like to show you concerned pictures as followings. Please note that Suntech logo is printed on the package. You can also find our customer service hot line printed on the package.



Carton box for A series and U series



Wooden Package for V serials

The above identifications methods are listed for you to avoid counterfeit products to be purchased from market place and used in your projects. We will develop more technology to make it easier to distinguish our products from products manufactured in other companies.

If you have any questions regarding the products you are offered or received, please contact our service hotline at +86 4008888009 or e-mail to services@suntech-power.com, after sales team will give you support in time. It will be appreciated if you can pass this declaration to your customers, business partners and other related parties to stop counterfeit products in the market places.

Best regards,

After Sales Team

Suntech Power Holdings Co.,Ltd